



# GAT MONTHLY MEMBERSHIP PROGRESS REPORT

Results as of: 8/31/2020

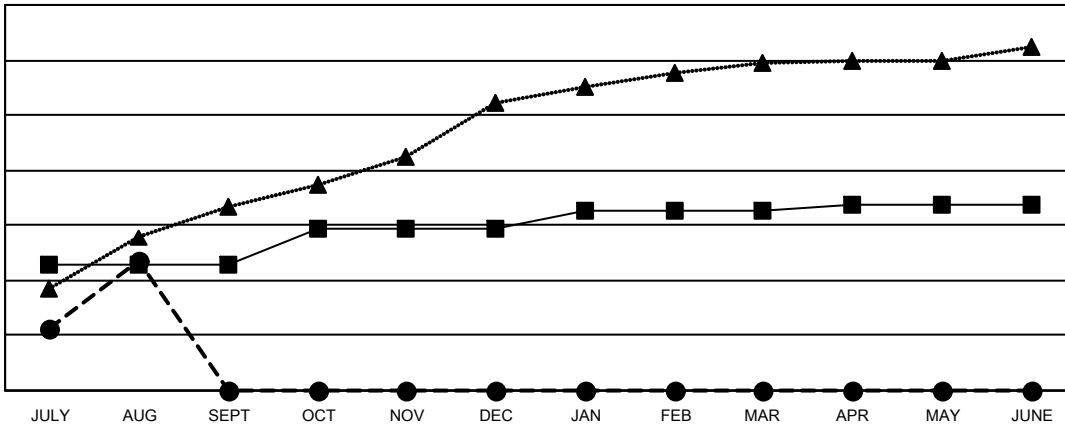
Multiple District 325

LOCATION: NEPAL

Clubs			
RESULTS FOR 2020-2021			
QUARTER	NEW CLUB GOAL	NEW CLUBS	DROPPED CLUBS
JULY/AUG/SEPT	91	94	2
OCT/NOV/DEC	26	0	0
JAN/FEB/MAR	14	0	0
APR/MAY/JUNE	4	0	0

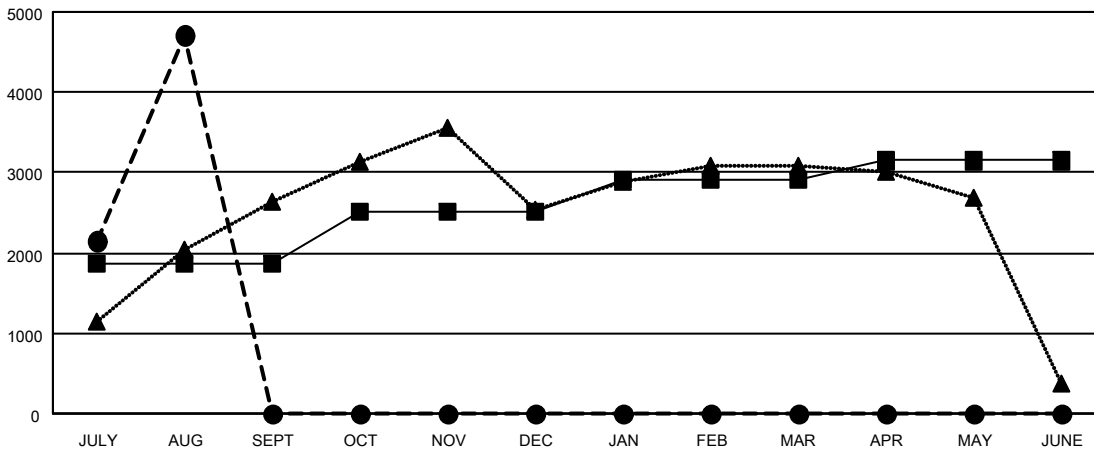
Members			
RESULTS FOR 2020-2021			
QUARTER	MEMBER GROWTH NET GOAL	MEMBER GROWTH ACTUAL	DROPPED MEMBERS ACTUAL (including transfers)
JULY/AUG/SEPT	1870	5,354	561
OCT/NOV/DEC	636	0	0
JAN/FEB/MAR	405	0	0
APR/MAY/JUNE	236	0	0

GOALS AND ACTUAL NEW CLUBS CUMULATIVE



- - CURRENT YEAR GOALS FOR NEW CLUBS
- - CURRENT YEAR ACTUAL NEW CLUBS
- ▲ - LAST YEAR ACTUAL NEW CLUBS

GOALS AND ACTUAL MEMBERS CUMULATIVE



- - MEMBER GROWTH NET GOAL
- - MEMBER GROWTH ACTUAL
- ▲ - LAST YEAR MEMBERSHIP ACTUAL

DROPPED CLUBS: 2	
<u>DROPPED MEMBERS</u>	
DECEASED	2
CLUB CANCELLED	0
OTHER	557
<b>TOTAL</b>	<b>559</b>

657 CLUBS OF 1432 ADDED 1 OR MORE NEW MEMBERS
<a href="#">CLICK HERE FOR CUMULATIVE MEMBERSHIP DATA</a>

<u>GENDER DISTRIBUTION</u>	
MALE	26,596 (74.07%)
FEMALE	9,309 (25.93%)
TOTAL FAMILY UNIT MEMBERS	24,656
FAMILY MEMBERS PAYING HALF DUES	16,045